



# Overton Park Seed Guide

Erin Deery, Mac Wilson, Colleen  
Hulsey, Griffin Williams,  
Rosalind Kenny Birch,  
and Tara Massad



# Introduction

This dichotomous seed guide to the trees of Overton Park is part of a research collaboration between Rhodes College and the Overton Park Conservancy aimed at understanding forest health and dynamics. While not comprehensive, it includes all the species found in seed traps distributed throughout the park.

To use this key, simply answer the questions describing how a seed looks, then look at the images taken of seeds from the park.



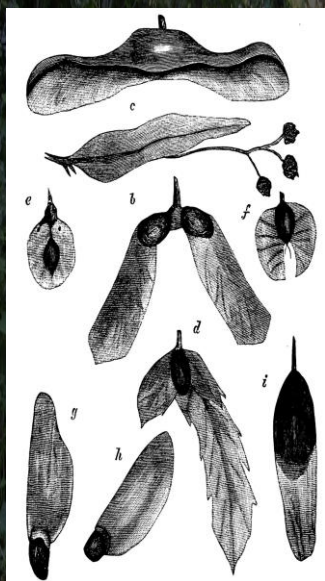


Is the seed...

winged or  
having a  
papery layer  
around seed

or

Not winged



Go to  
page 35

Go to  
page 4

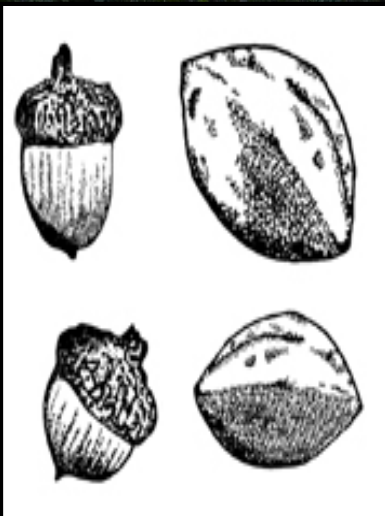


Is the seed...

Large (larger  
than 1 cm in  
diameter)  
with a hard,  
protective layer

or

Smaller than  
1 cm in  
diameter



Go to  
page 5



Go to  
page 16



Does the seed...

have a  
scaly  
cap

or

not  
have a  
scaly cap



Go to  
page 6

Go to  
page 13

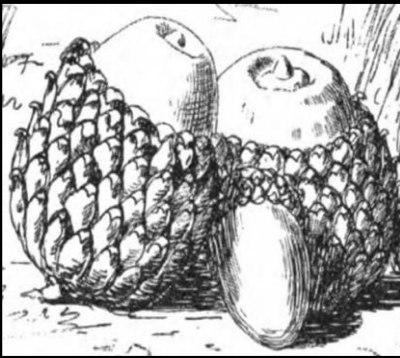


Is the seed...

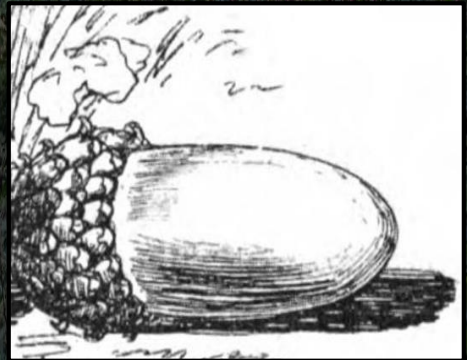
More  
round than  
elliptical

or

More  
elliptical  
than round



Go to  
page 8



Go to  
page 7



*Quercus alba*

white oak





Does the seed look  
like...



Go to page 9



Go to page 11



Go to page 10



Go to page 12



# Quercus falcata

southern  
red oak





# Quercus velutina

eastern black oak





# Quercus pagoda

cherrybark oak





# Quercus muehlenbergii

Chinkapin oak

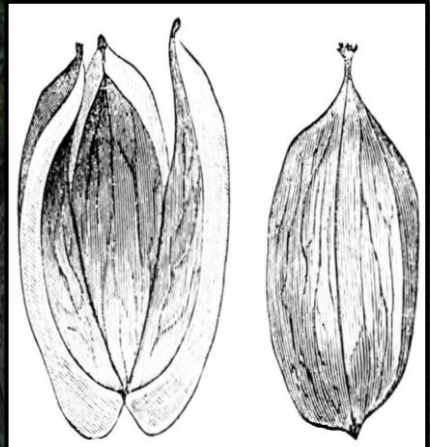




Does the seed...

Have ridges  
separating  
shell into four  
segments or

Not have  
ridges  
separating  
shell



Go to  
page 14

Go to  
page 15



# *Carya* *cordiformis*

bitternut hickory





*Carya*  
*tomentosa*  
mockernut hickory



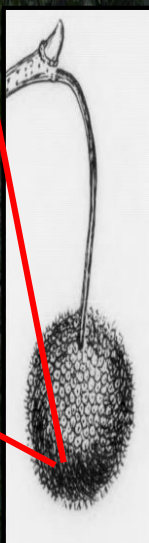


Is the seed...

very small,  
elongated and  
fringed with  
hairs

or

not fringed  
with hairs



Go to  
page 17

Go to  
page 18



# *Platanus occidentalis*

American sycamore





Is the seed...

uniform in  
coloration

or

patterned



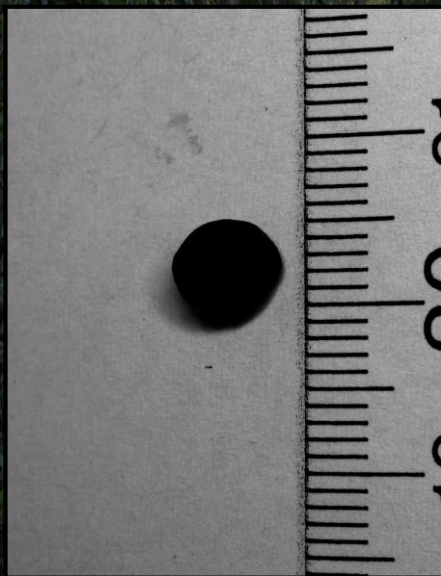
Go to  
page 19

Go to  
page 32



Is the seed...

Round or not round



Go to  
page 20



Go to  
page 29



Is the seed...

wrinkled or not wrinkled



Go to  
page 26



Go to  
page 21

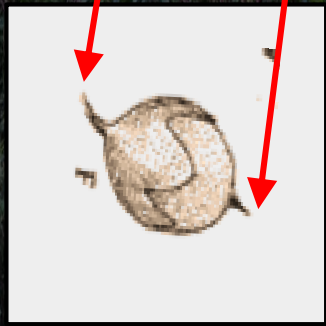
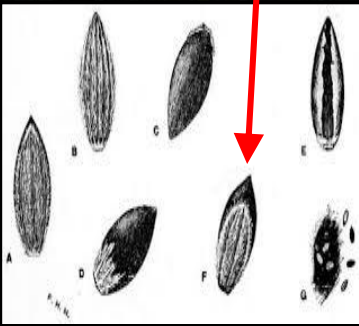


Does the seed...

Come to a  
tapered  
point at one  
end

or

Come to a  
tapered point  
at both ends



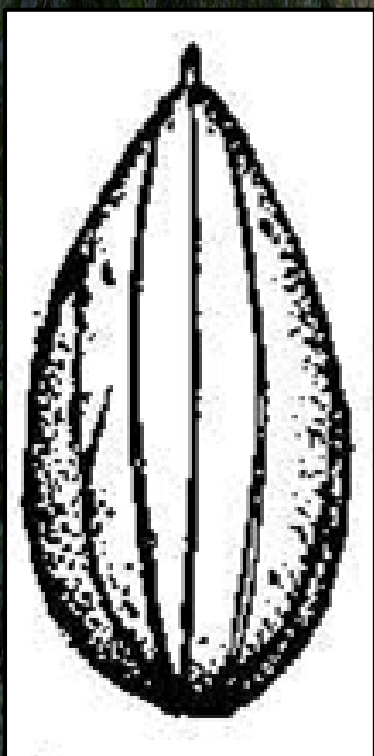
Go to  
page 22

Go to  
page 25



Is the seed...

striated or not striated



Go to  
page 23



Go to  
page 24



*Cornus*  
*drummondii*  
Roughleaf dogwood





*Prunus*  
*serotina*  
black cherry





# Sassafras albidum

sassafras





Is the seed...

Striated with  
grooves

or

not striated



Go to  
page 28

Go to  
page 27



# *Celtis* *laevigata*

sugarberry or southern  
hackberry





# Cornus alternifolia

pagoda or alternate leaf  
dogwood





Does the seed...

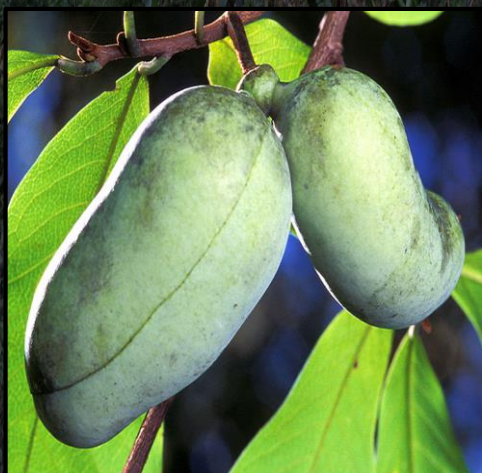
Have a red  
aril and is  
less than  
2 cm

or

not have a red  
aril and  
is greater than  
2 cm



Go to  
page 30



Go to  
page 31



# Magnolia grandiflora

Southern magnolia





*Asimina*  
*triloba*

Pawpaw



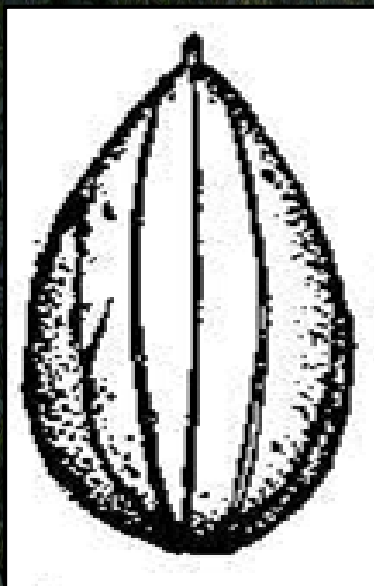


Is the seed...

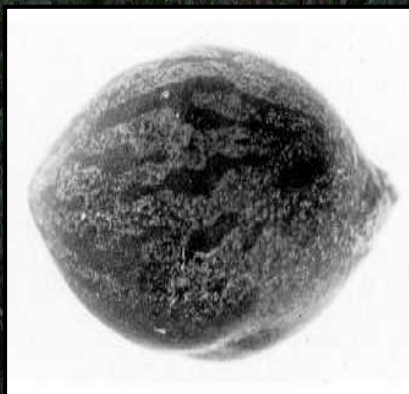
Elongated  
and striated

or

round with  
a mottled  
coat



Go to  
page 33



Go to  
page 34



# Nyssa sylvatica

black tupelo





*Lindera*  
*benzoin*  
spicebush



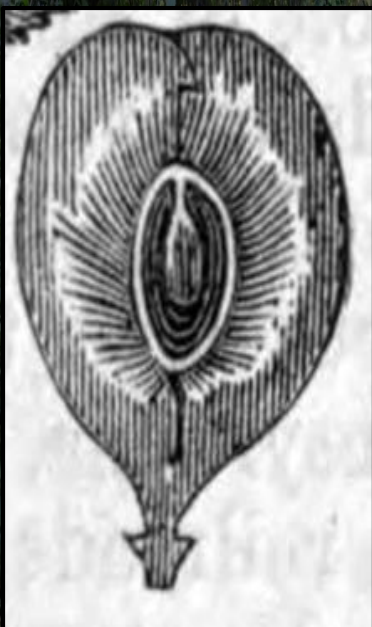


Is the seed...

Enclosed by  
the wing

or

on one end of  
the wing



Go to  
page 36

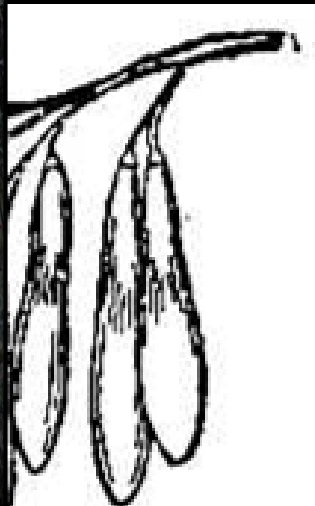
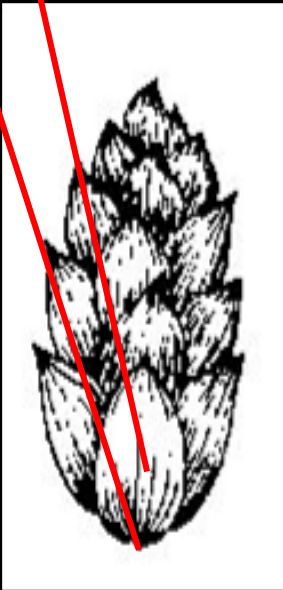
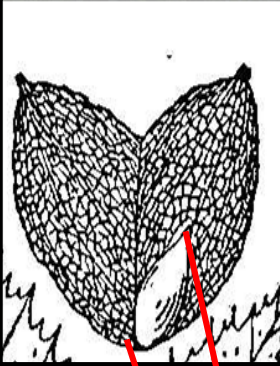
Go to  
page 45



Is the seed...

Loosely  
enclosed  
within the wing or

tightly  
enclosed  
within the  
wing



Go to page 37

Go to page 38



# Ostrya virginiana

American hophornbeam



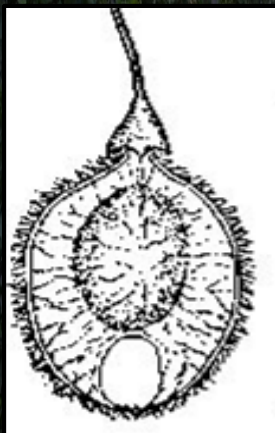


Is the seed...

Single, large  
(greater  
than .5 cm)

or

in a capsule,  
with many tiny  
seeds (1-3 mm  
in diameter)



Go to  
page 40

Go to  
page 39



*Paulownia  
tomentosa*  
empress tree



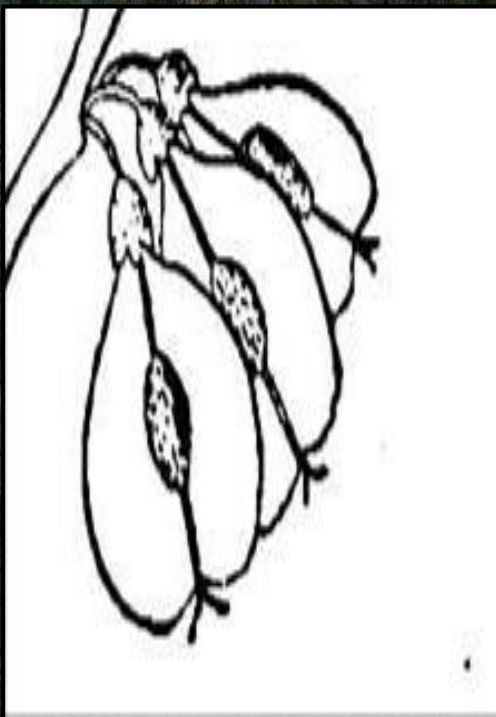
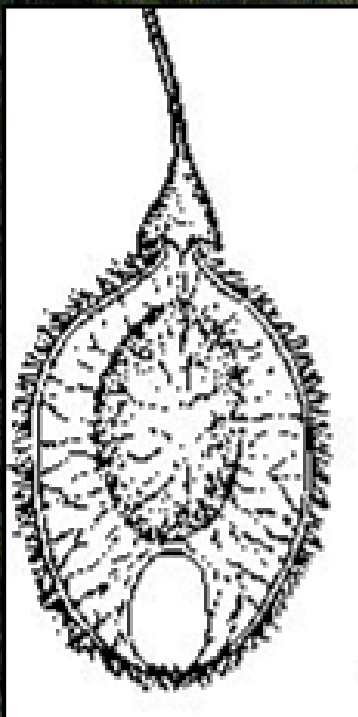


Is the seed...

Fringed with  
short hairs

or

not fringed by  
short hairs



Go to page 42

Go to page 41



*Ulmus rubra*

slippery elm



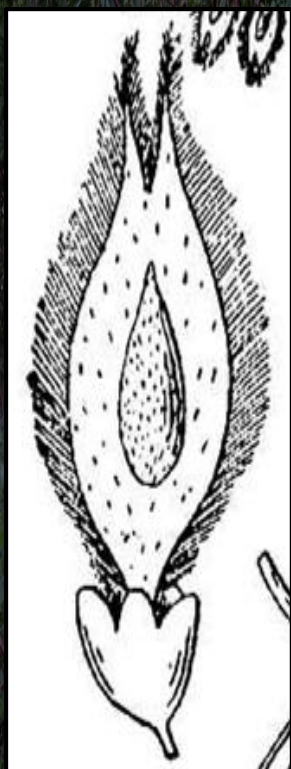
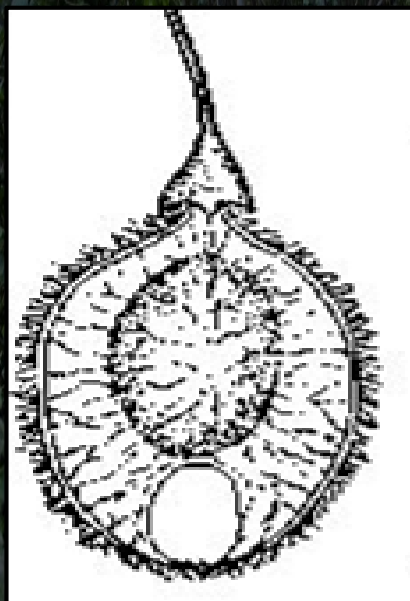


Is the seed...

More rounded  
and large  
(seed is  
greater  
than 1 cm)

or

More  
elongated and  
small (seed  
is less  
than 1 cm)



Go to page 43

Go to page 44



*Ulmus*  
*americana*  
American elm





*Ulmus alata*

winged elm or  
wahoo





Is the wing...

woody  
and brittle

or

Thin  
and papery



Go to  
page 46



Go to  
page 51



Is the wing...

More planar  
and two  
dimensional

or

Hooked on  
one end,  
commonly in  
a cone



Go to page 47

Go to page 50



Does the seed...

come  
almost to a  
point at  
one end

or

stay more  
rounded  
at  
both ends



Go to page 48

Go to page 49



*Fraxinus*  
*pennsylvanica*  
green ash





*Fraxinus*  
*americana*

white ash





# *Liriodendron tulipifera*

tulip poplar





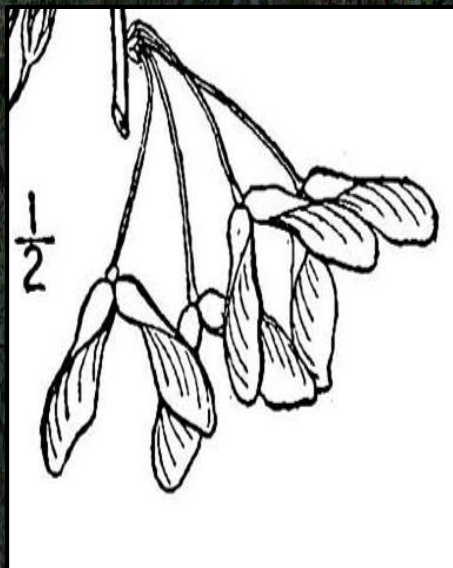
Is the seed and  
wing...

Less than 1  
cm long  
Commonly  
found  
in a spiky ball



or

greater  
than 1 cm  
long and a  
"helicopter"



Go to page 52

Go to page 53



*Liquidambar  
styraciflua*  
sweet gum



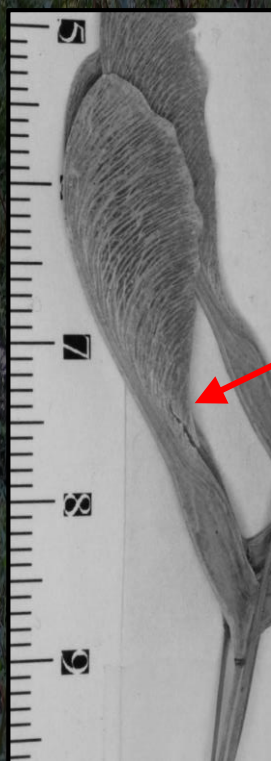
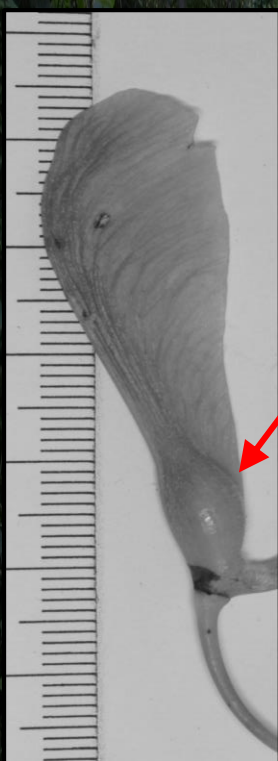


Does the wing...

Follow the  
length of  
the seed

or

end at  
the seed



Go to page 54

Go to page 57



Is the wing...

Red, fades  
with age

or

Green, fades  
with age



Go to  
page 55

Go to  
page 56



# Acer rubrum

## Red maple



Left: mature seeds;  
Right: fresh seeds



# Acer saccharinum

silver maple



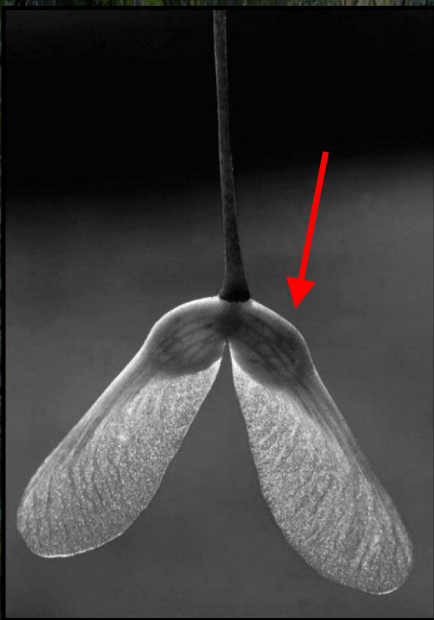


Is the seed...

Round

or

long and  
narrow,  
looks  
wasp-like



Go to  
page 58



Go to  
page 59



# Acer saccharum

sugar maple





# Acer negundo boxelder maple

