

# The DML Nikon Scanner

There are four pieces to the Nikon scanner. There is the scanner itself, the filmstrip holder, the slide adapter, the film strip adapter and the slide mount adapter

The power button is located at the lower left corner of the scanner



The filmstrip holder fits into the slide mount adapter so you can easily scan in filmstrip negatives, one image at a time.



The slide mount adapter is used to scan 35mm slides as well as film placed in the film strip holder. When inserted, the holder will slide back and forth to scan one of three negatives on the the inserted strip. To scan the other images simply pull out the holder and insert the opposite end.



The picture to the left is of the back of the Nikon scanner, where the filmstrip leaves the scanner.

Be sure that you open the hatch on the back of the scanner; otherwise, the film could get jammed or damaged.

The filmstrip adapter feeds strips of film into the scanner and can be used to speed the process of scanning multiple images from a single strip.

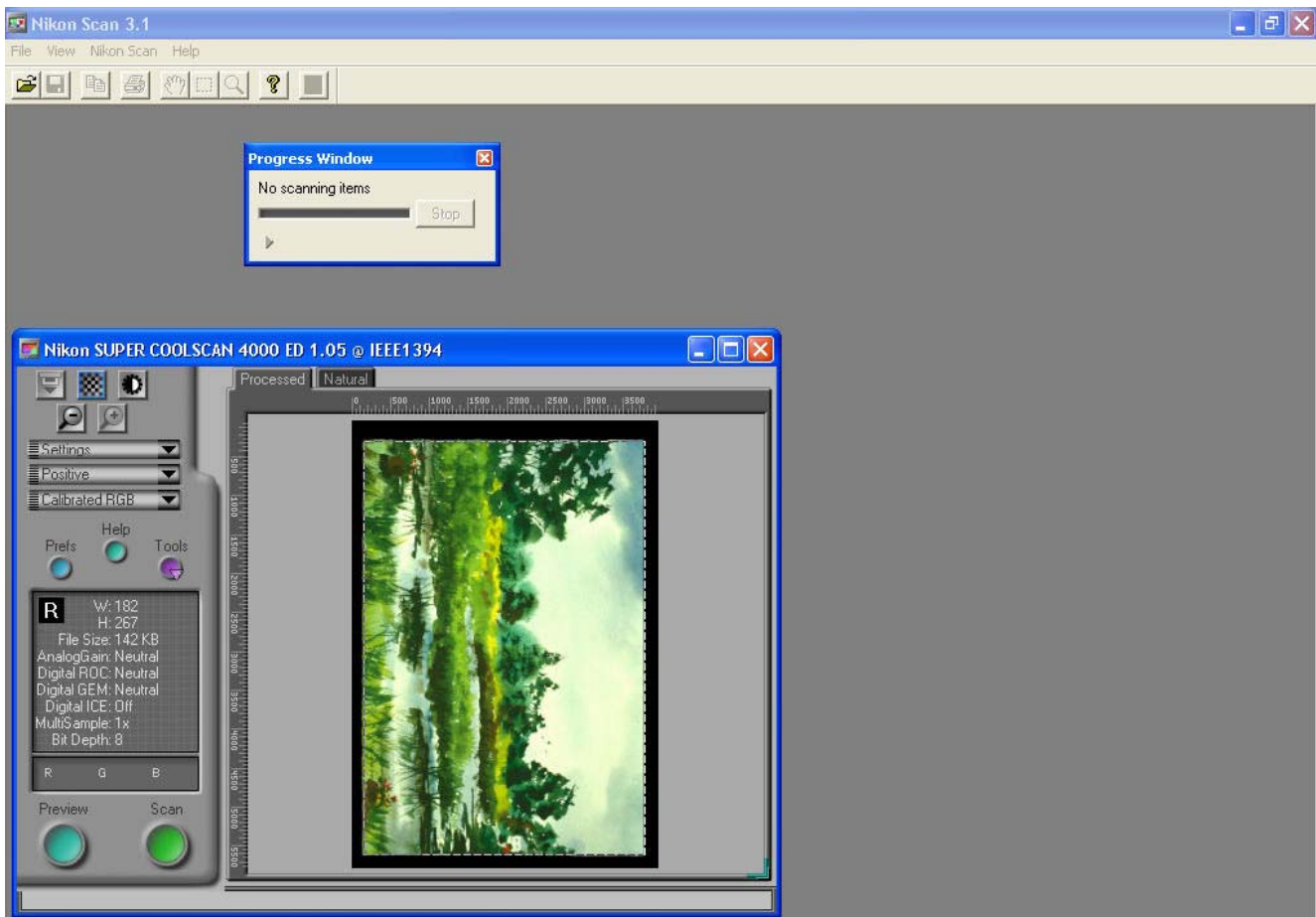


# Scanning 35mm Slides

When scanning slides, you must first attach either the slide mount adapter or the slide batch scanner highlighted in the picture to the right. Before inserting the slide, you must determine which side of the strip is the emulsion side. The emulsion side will not be reflective as the other side. The emulsion side has the actual picture printed on it and should always face down. If you want the picture inverted, use the software to rotate the image after scanning. If you have a full sized slide, it is important to put it in the long way; otherwise, the edges will get cut off. If you have a half size slide you should place it in the wide way as it will be easier to crop later. If the scanner is not already on, press the power button.



Open the Nikon scanning program by clicking on the **Start Menu Button**. On the bottom of the screen, click **All Programs** and then click **Nikon Scan 3.1**, then click on the second button labeled **Nikon Scan 3.1**. You will see a screen that looks like the one below.



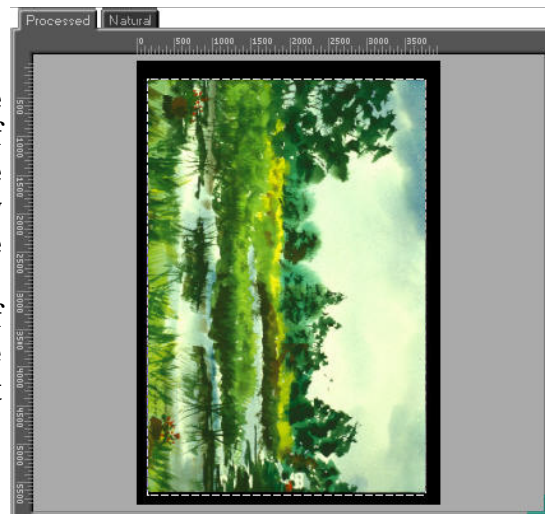


The menu shown here is the interface you will use the most. It has all of the basic functions on it.

The five square buttons at the top of the menu are used to adjust the scan. Use them after the preview but before the final scan.

1. Used when you are scanning in negatives using the filmstrip adapter.
2. The auto focus button, although the scanner does a pretty good job the first time.
3. The brightness button controls the brightness of the image.
4. and 5. Zoom in and out, but the result is hardly noticeable.

After inserting your slide press the Preview button on the bottom left of the menu. The scanner will scan the image and display it in a preview screen like the one shown to the right. Use the mouse to click, hold, and drag a box around the part of the image you want to scan. If the slide looks as though it has been cut off, take the slide out, rotate it 90°, and reinsert.



Next are the three bars below the five square buttons.

The Settings bar is used to manage your personal settings and will not need to be used.

The middle bar brings down a menu. This is where you tell it what type of slide you have:

- Positive (which is the default)
- Neg (color)
- Neg (mono)
- Kodachrome

Choose the appropriate one for your slides.

The final bar is where you choose how you want the slide to be scanned. For example, you could have a positive slide that you want to be scanned in greyscale (black and white).

Your choices are:

- Greyscale
- Calibrated RGB (which is default)
- CMYK (A higher quality color scheme; not all software or printers support it)

As for the three buttons pictured below:


**Prefs** this is the advanced setting menu most people never need to use this.

**Help** This is pretty self explanatory

**Tools** more advanced settings

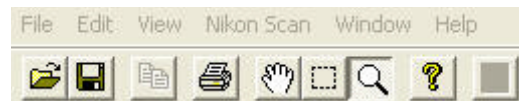




When you have made your selections, press the scan button (circled in blue).


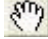
The scanned image will appear behind the preview window. Minimize the preview window by pressing the button in the upper right hand corner of the window 

Once the preview window is minimized, you will see a window that looks like the one at the bottom of this page. The pull-down menus in this are just like any another Windows application.

The quick buttons work the same as well.



 Opens an image  Saves an image.  Copies the selected piece of an image.

 Prints the image.  If the image is bigger than the screen, this will let you move it around.

 Zooms in on the image.  Crops the selected section of the image.

 This button opens the help menu.

Remember to save everything into a DML Project folder. Files saved elsewhere will be deleted weekly.

