



How to configure a Windows Mobile Smartphone to Sync

[About Barret](#)

[Research Sources](#)

[Library Services](#)

[Technology Services](#)

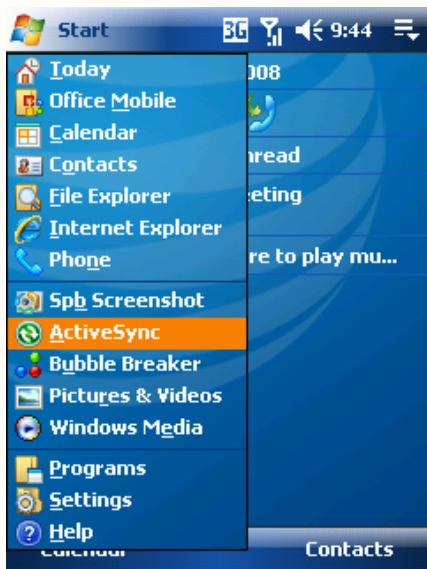
[Need Help?](#)

[Ask Us!](#)

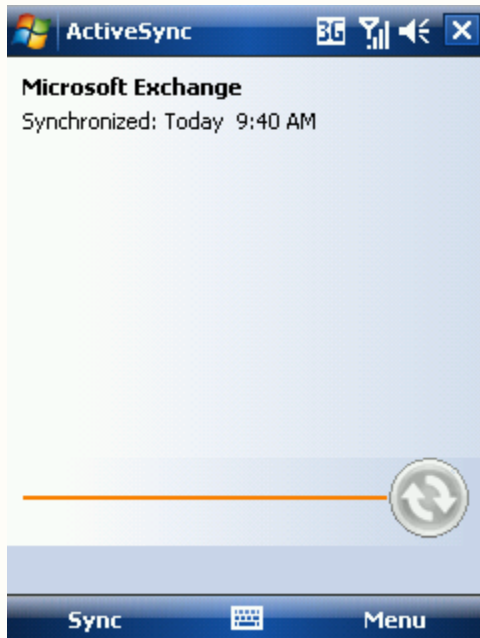
[Search](#)

How to Sync a Windows Mobile Smartphone with Rhodes E-mail, Contacts, and Calendar

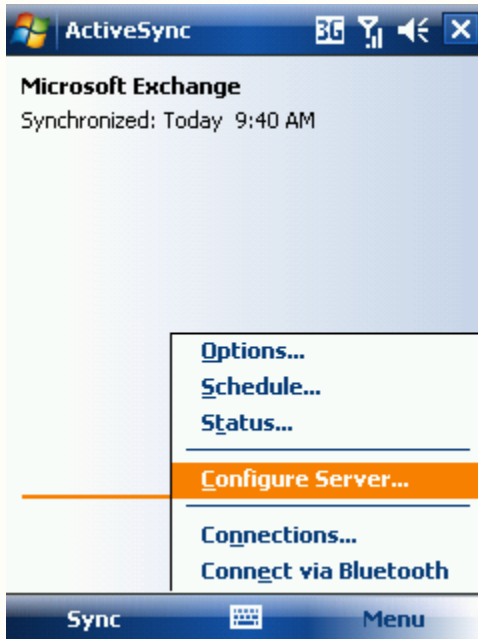
- 1) Hit the start button and locate "ActiveSync"



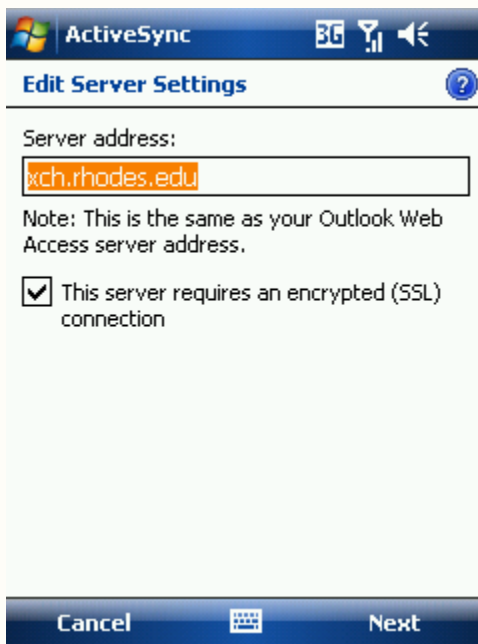
- 2) The ActiveSync window will open.



- 3) Click the Menu button at the bottom right and select "Configure Server"



- 4) In the Edit Server Settings Windows, type xch.rhodes.edu as the Server Address and click Next. **Make Sure "This server requires an encrypted (SSL) connection" is checked**



- 5) Enter your Rhodes Username and Password; then enter **Rhodes** as the domain and click next.

ActiveSync

Edit Server Settings

User name:

Password:

Domain:

Save password
(required for automatic sync)

Advanced...

Back **Next**

- 6) Select the items you wish to sync with your phone and click finish.

ActiveSync

Edit Server Settings

Choose the data you want to synchronize:

- Contacts**
- Calendar
- E-mail
- Tasks

Settings...

Back **Finish**

- 7) Your phone will start syncing and will continue to sync every 5 minutes or as your receive e-mail.