



Share Network Files

[About Barret](#)

[Research Sources](#)

[Library Services](#)

[Technology Services](#)

[Need Help?](#)

[Ask Us!](#)

[Search](#)

Rhodes College provides three shared volumes on a fileserver to support Academic Departments and Programs, the Student Community, and the Faculty & Staff Community:

Acad_Dept_Pgm on Rhodes File Server

(Academic Departments and Programs) This volume is dedicated exclusively to faculty teaching and research work. Information is organized by academic departments and academic programs. Faculty members have been assigned folders within their respective departments. The faculty folder name is the faculty member's full name. For example, the folder name for Gary Lindquester is "Lindquester_Gary".

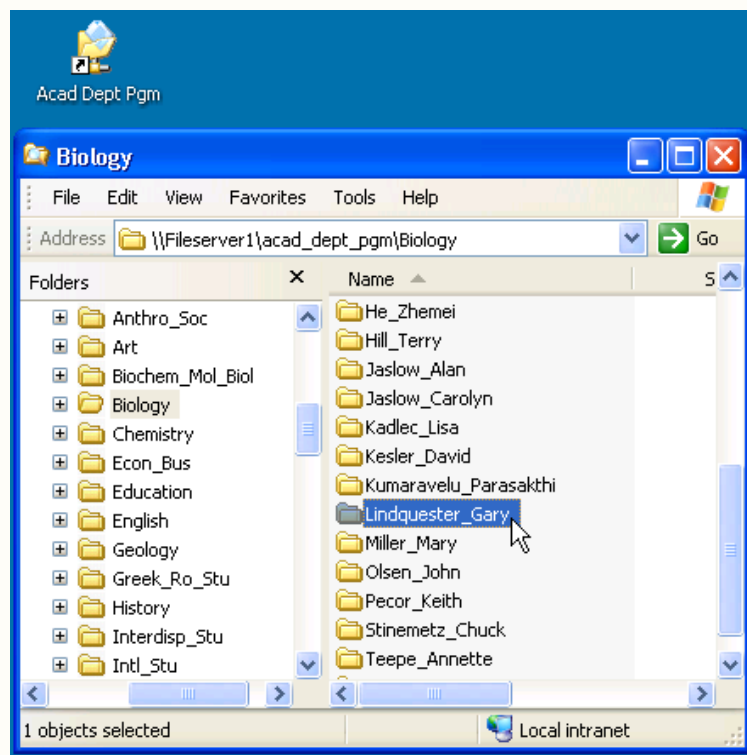
SEE ALSO:

[Windows Shortcuts/Icons for Fileservers](#)

[Giving Others Access to Your Folders on the File Server](#)

[Remote Access to the Fileserver with WinSCP \(PC\)](#)

[Macintosh Access to the Fileserver with Fugu](#)



Each faculty folder contains three folders: Public, Private and InBox.

Access permissions have been set to give you full control of all three folders.

- **Public:** Files placed in the Public folder can be read and/or copied by anyone with a Rhodes account.
- **Private:** Files placed in the Private folder can only be accessed and/or viewed by you or anyone that is setup by you.
- **InBox:** The InBox is set up so that all users can move files into the InBox but they cannot view the contents of the InBox unless you give them broader access.

Files can only be placed into Public, Private and InBox folders. You cannot move a file outside these three folders. You can create and/or delete folders within any of these three folders: Public, Private and InBox.



Student_Community Folder on Rhodes File Server

Here are student organization folders and individual students' folders. Students are assigned a folder with their full name. Only students can read what is put into the folder. Professors can copy documents to student folders but they cannot see what is in a student's folder. Student Organizations have folders here also, and within each organizational folder is the same Public, Private and InBox structure and access.

FacStaff_Community on Rhodes File Server

This volume is dedicated to internal work. Only faculty and staff departments have folders here. Within each departmental folder is the same Public, Private and InBox structure and access.

