



Changing Your Rhodes Network Password

[About Barret](#)

[Research Sources](#)

[Library Services](#)

[Technology Services](#)

[Need Help?](#)

[Ask Us!](#)

[Search](#)

The Rhodes Network Password is used to access email, file servers, log into the computer labs, and things of that nature.

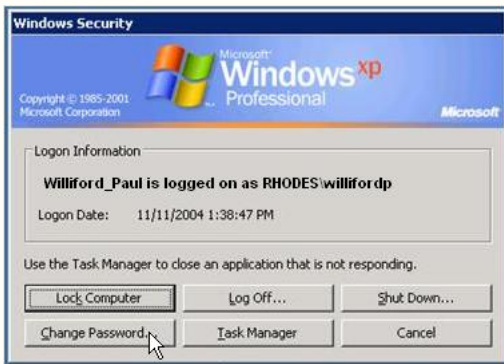
Changing Your Password from On-Campus

To change your Rhodes Network Password, log into any PC computer on campus located on the RHODES domain, such as the PCs in the computer labs or any of the public spaces around campus. After logging in, hold down the Ctrl and Alt keys and push the Delete key. (This is commonly called **Ctrl-Alt-Delete**.) A window will appear.

SEE ALSO:

[Creating a Good Password](#)

[BannerWeb Username & Password](#)



Select the button to **Change Password**.

You will have to type your old password and then your new password twice. Finally, click the OK button to save the password. Your Rhodes Network Password is now changed. Be sure to remember the new password, as you will have to type it from now on to access the Rhodes network, your email account, or any other resources requiring a Rhodes Network Password.

Changing Your Password from Off-Campus

You can also change your email password by going the following URL and filling out this simple form:

<https://www.rhodes.edu/iisadmpwd/aexp2b.asp>

Change your password

The domain is RHODES.

Your username is the first part of your email address (ie. everything before @rhodes.edu).

Domain:	<input type="text" value="RHODES"/>
Username:	<input type="text"/>
Old password:	<input type="text"/>
New password:	<input type="text"/>
Confirm new password:	<input type="text"/>
<input type="button" value="OK"/> <input type="button" value="Cancel"/> <input type="button" value="Reset"/>	