



# Using Sharepoint

[About Barret](#)

[Research Sources](#)

[Library Services](#)

[Technology Services](#)

[Need Help?](#)

[Ask Us!](#)

[Search](#)

Sharepoint (Share.Rhodes) is a place for college committees, official groups, and colleagues engaged in a common goal to meet online and share documents, photos, contact lists, and event lists, as well as engage in online discussions and take part in group surveys, all using their web browser in a secure environment.

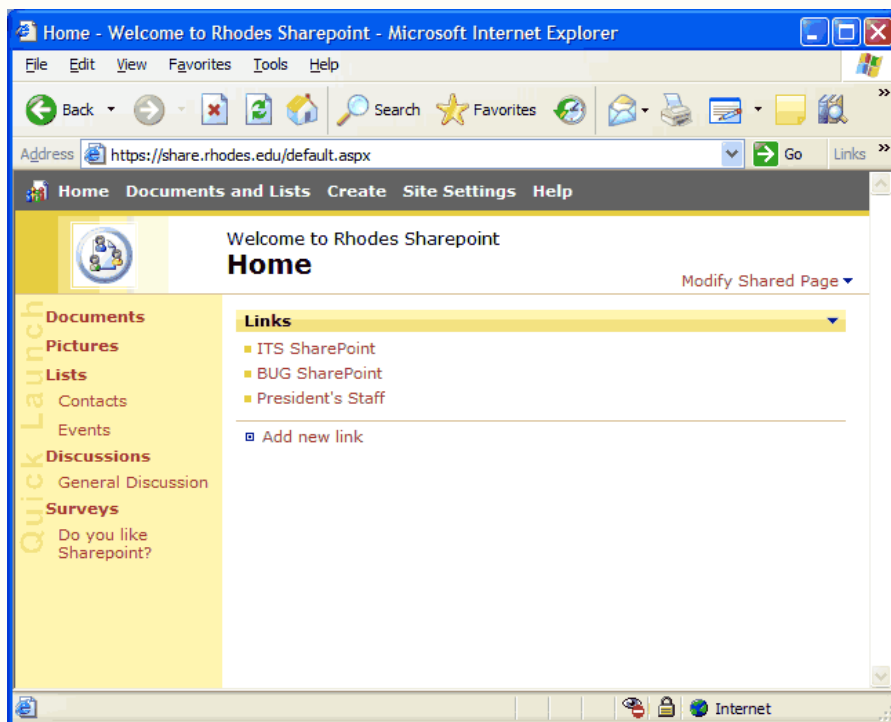
## SEE ALSO:

[Configuring Internet Explorer to Log In to Sharepoint Automatically](#)

Before attempting to access Share.Rhodes, you will first need to be informed that your group has had a Share.Rhodes home created for it. If your group has a Share.Rhodes home created, you will be informed of it.

To access your group's Share.Rhodes home, go to: <https://share.rhodes.edu>

Once there, you will need to log in with your Rhodes Network username (formatted as RHODES\your\_username) and password. After logging in, you see a list of Share.Rhodes homes that look like this in your web browser:



At this point, simply find your group's Share.Rhodes home and click it to enter.

**Note that you will not be able to enter Share.Rhodes home that you have not been invited to.**