



Macintosh Access to the Fileserver with Fugu

[About Barret](#)

[Research Sources](#)

[Library Services](#)

[Technology Services](#)

[Need Help?](#)

[Ask Us!](#)

[Search](#)

Access to files on the Rhodes file servers is available through the use of SFTP (secure file transfer protocol). This means that you need to use an SFTP program to access your files, because it will log you in and securely allow you to transfer files to and from the Rhodes file servers.

SEE ALSO:

[Share Network Files](#)

[Remote Access to the Fileserver with WinSCP \(PC\)](#)

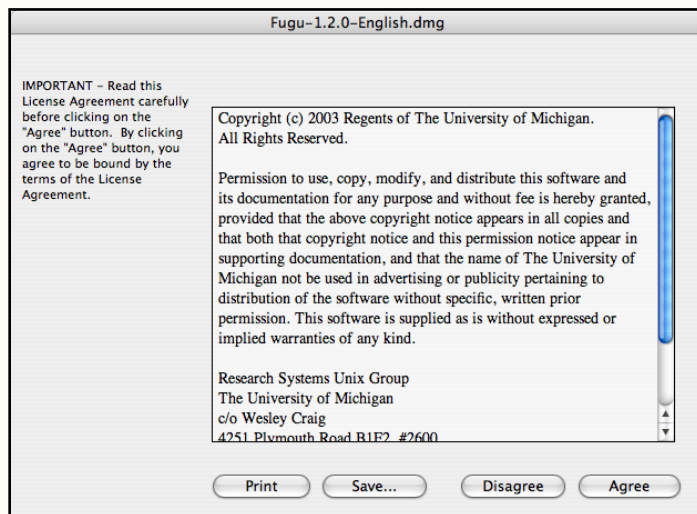
If you are using a Mac, we recommend Fugu as a fast, free, and easy SFTP program that runs on Mac OS X.

Installing Fugu

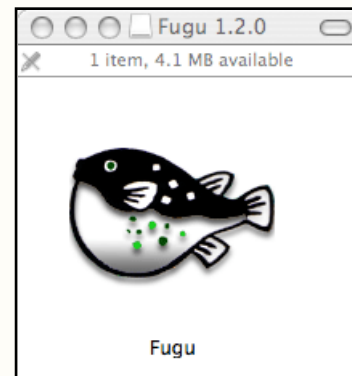
1. Download the Fugu installer (called a Disk Image) and save it to a place you can remember, such as your Desktop.

[Click this link to download Fugu to your Mac computer](#)

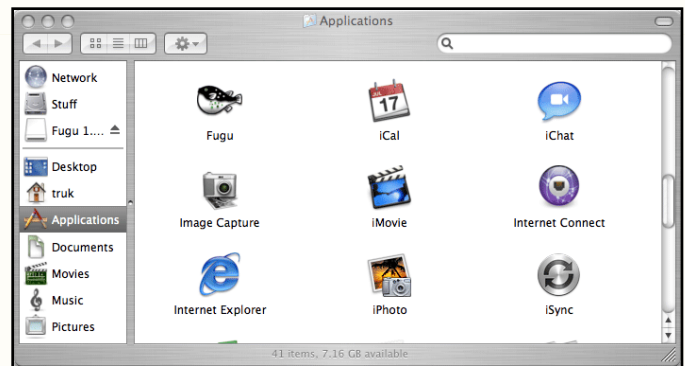
2. Once you have the Fugu disk image downloaded, your Mac may mount the disk image and you will see a Fugu disk icon appear. If this does not happen, then double-click the Fugu.dmg file on your Desktop to mount the disk image. Regardless, at the time the disk image is mounted, you will need to click **Agree** to the license that appears:



3. Double-click the mounted disk image to open it up. You will now see the Fugu application in a new window:



4. Open up your Applications directory on your Mac's hard drive. The easiest way to do this is to double-click your hard drive icon and then click on the Application icon on the left side. Now, drag the Fugu icon from the previous window into the Applications window to copy the Fugu program to your Applications area. This will add the Fugu application to your Application icons:



5. At this point, Fugu is installed. You can close the Fugu window that is open and drag the mounted Fugu disk image to the Trash to unmount it.

Making a connection to the Rhodes filesystems is easy with Fugu:

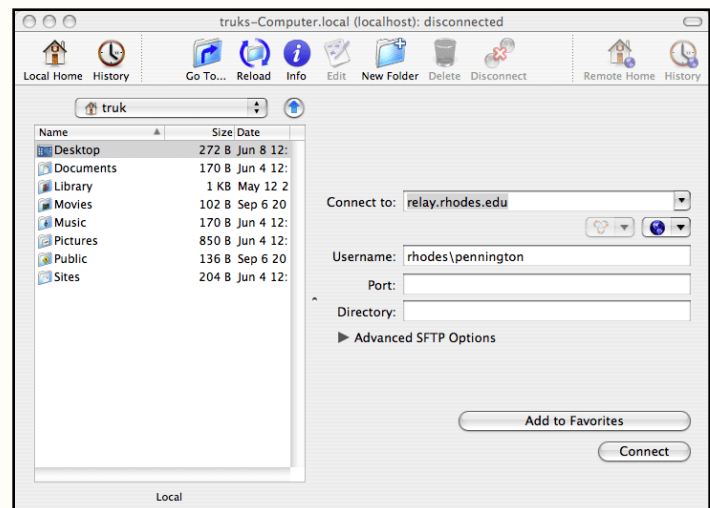
1. Double-click the Fugu application in the Applications area to launch it. (After it is launched, you can hold down the Option key and click on the Fugu icon in the Mac OS X Dock to select to Keep In Dock so that you can launch Fugu from the Dock from now on.)

When Fugu opens up, you will see a connection window.

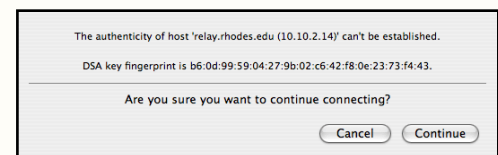
Fill in your information in this box.

Connect to: **relay.rhodes.edu**

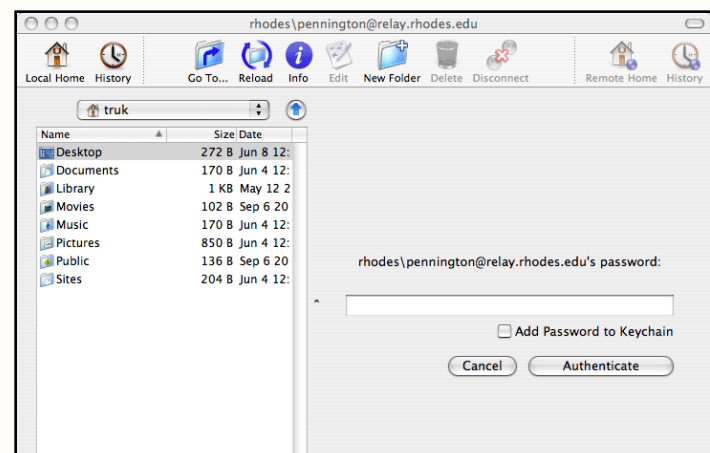
Username: **RHODES\username**



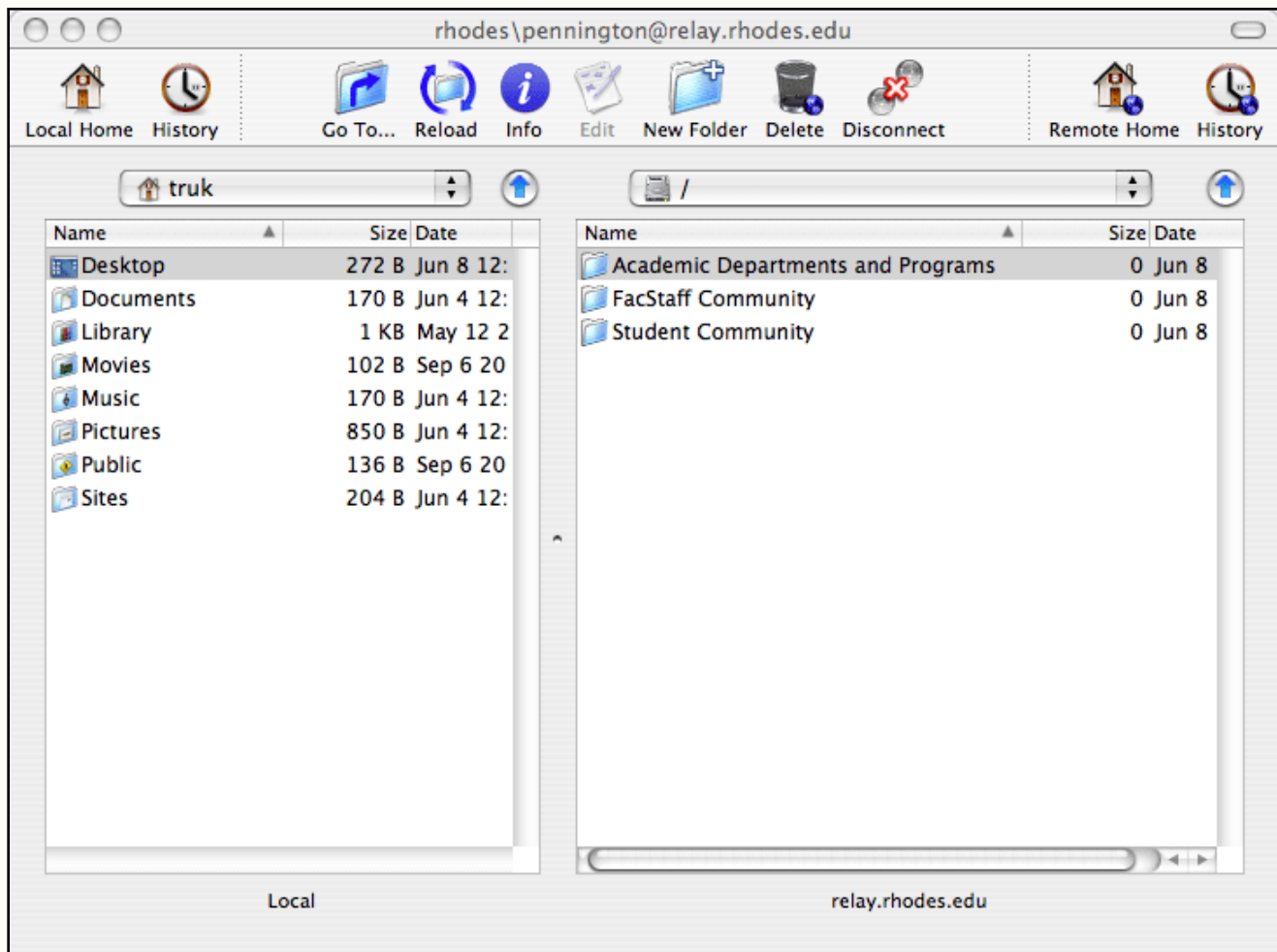
2. When you click **Connect**, Fugu will tell you that the fingerprint of the Rhodes filesystem is unknown. Just click **Continue**.



3. You will now need to type in your Rhodes Network password (the same one you use for email) and click the **Authenticate** button:



4. At this point, you should be connected to the Rhodes fileserver and see the first set of directories:



Double-click to navigate these directories like you would normally do if you were on-campus, browsing the fileserver.

Note that you can save these connection settings by clicking the **Add to Favorites** button on the Connection screen. This allows you to simply select this connection in the future, type your password, and get connected faster.