



Remote Access to the Fileserver with WinSCP (PC)

About Barret

Research Sources

Library Services

Technology Services

Need Help?

Ask Us!

Search

How can I access my files on the Rhodes fileservers from off-campus?

Windows Users should use a Secure FTP client called WinSCP. Installing and configuring WinSCP is easy. Follow these steps:

1. Download the WinSCP installer and save it to a place you can remember, such as your Desktop.

[Click this link to download WinSCP to your computer](#)

2. To start the installer, double-click the file you downloaded (for example, "winscp374setup.exe"). If you are presented with a Security Warning dialog box, such as the one below, please click **Run**.

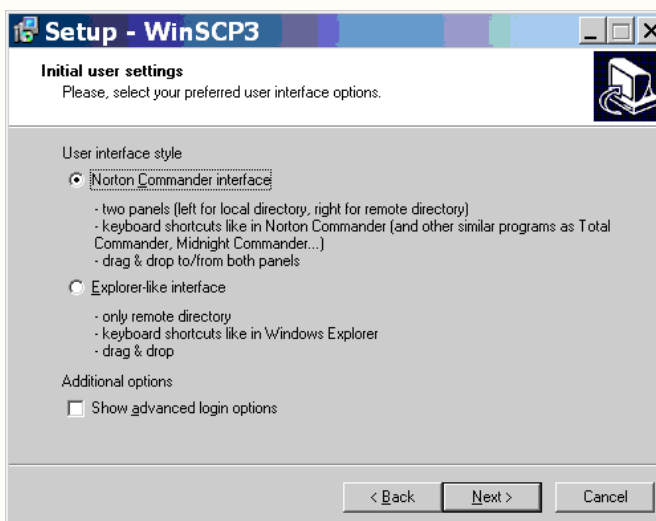
3. Click **Next**. Select *I accept the agreement* and click **Next**. Accept the default installation path by clicking **Next**. Proceed with the Full Installation by clicking **Next**. Click **Next**, and then click **Next** again.

4. You will be presented with a dialog box asking to choose your interface.

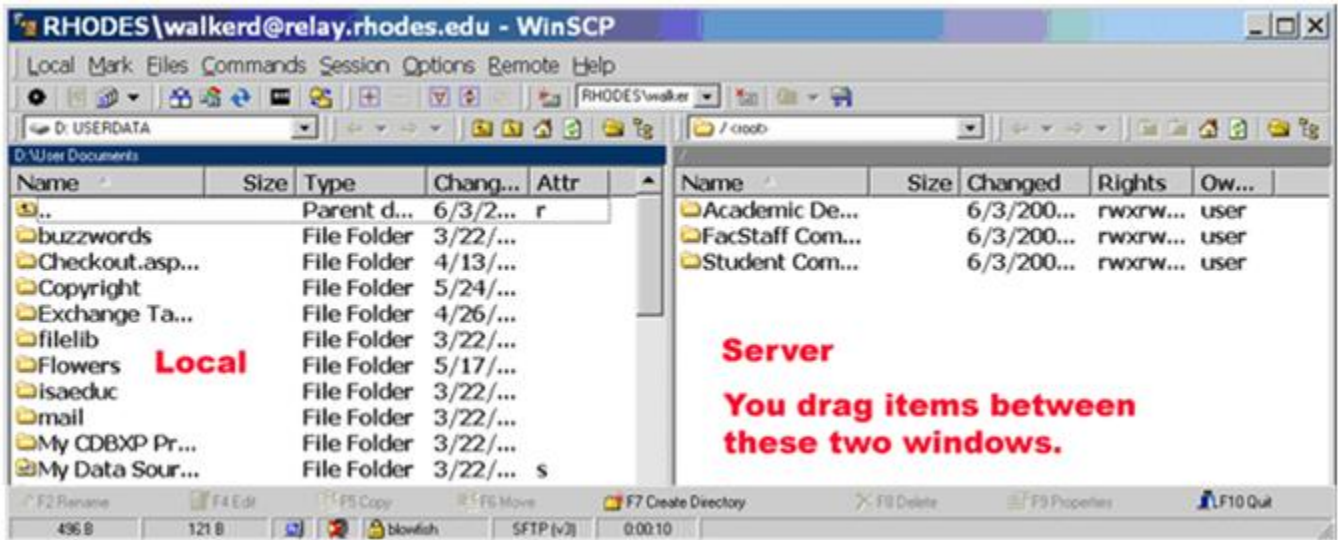
SEE ALSO:

[Share Network Files](#)

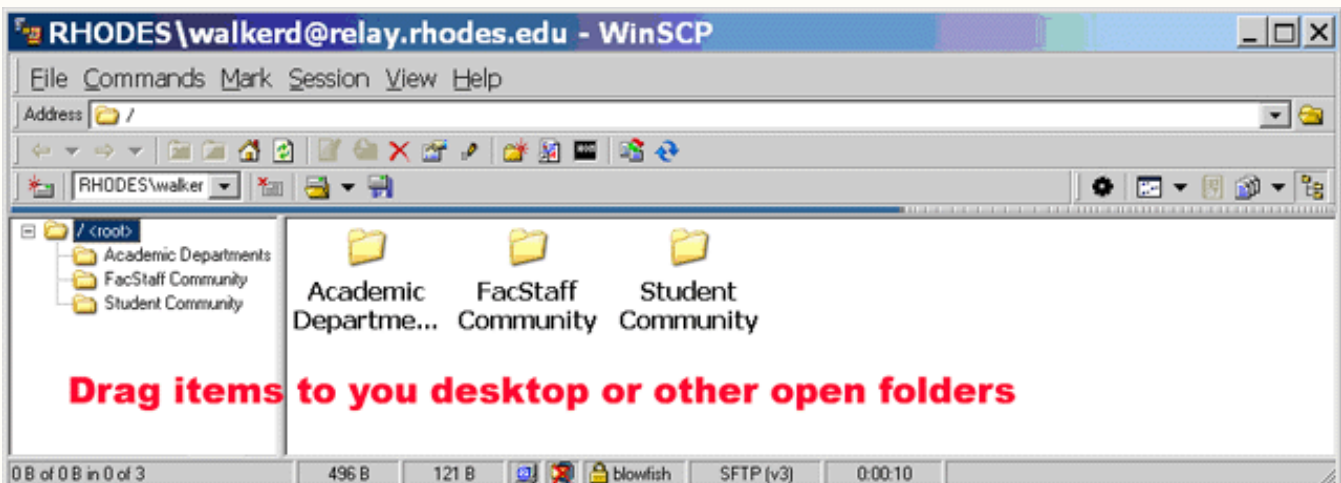
[Macintosh Access to the Fileserver with Fugu](#)



The Norton Commander interface looks like this:



The Explorer-like interface looks like this:



We recommend the Explorer-like interface. Make your choice and click **Next**.

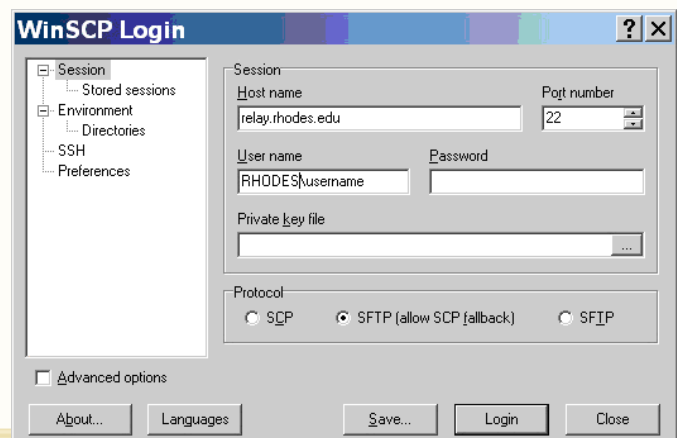
5. Click **Install**, and click **Finish**.

6. After the installation you will be presented with the WinSCP Login Screen.

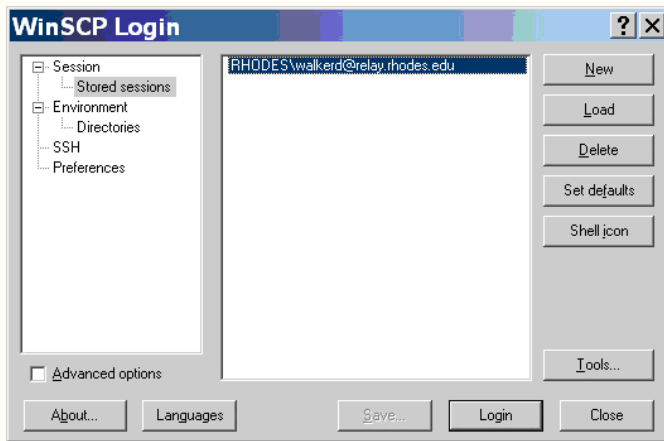
The Host name is: **relay.rhodes.edu**

Your User name is: **RHODES\username**.

DON'T FILL IN YOUR PASSWORD YET.

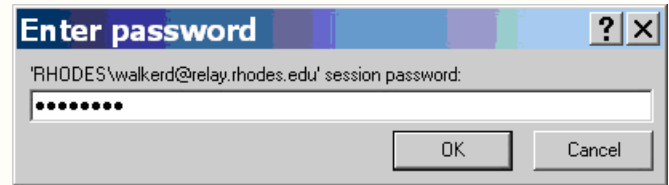


Click **Save**.

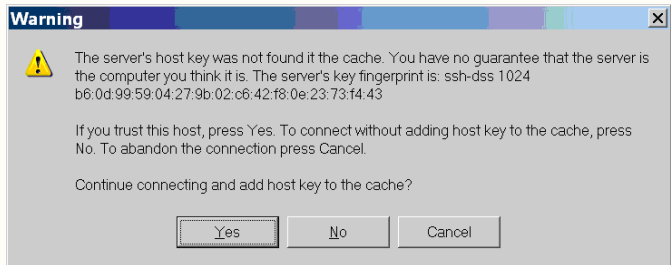


7. Click **Login**.

8. Enter your Rhodes Network password.



9. You will be presented with a warning screen.
Click **Yes**.



10. You are now connected to the Rhodes file servers. The folder structure should be familiar to you with what you see on-campus.

Copying files to and from the Rhodes file server is as easy as dragging and dropping the file out of the WinSCP application to your hard drive.

The next time you want to log into the Rhodes file servers, you only need to bring up the WinSCP application from your Start menu and double-click your saved profile information for Rhodes in the WinSCP window. You will need to type your Rhodes Network password every time you connect.