



# Remove Wavy Red & Green Lines in Microsoft Word

About Barret

Research Sources

Library Services

Technology Services

Need Help?

Ask Us!

Search

## How do I get rid of the wavy red and green lines in my document?

Microsoft Word can be set to automatically check your spelling and grammar as you type. When it encounters what it believes is an error it will highlight it with a “wavy” red or green line:



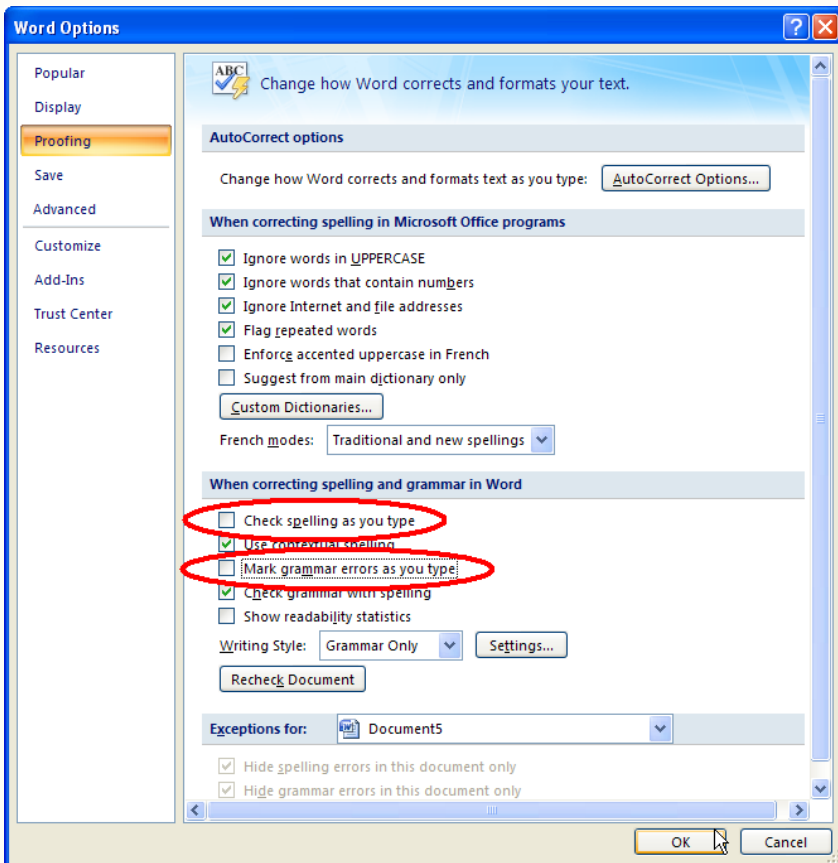
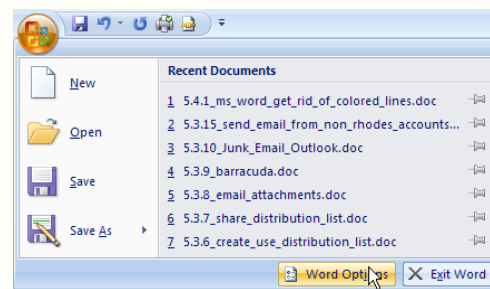
If these lines distract you the solution is to turn off automatic spelling (red) and/or grammar checking (green).

Click on the Office button and click the **Word Options** button.

### SEE ALSO:

[Insert Footnotes or Endnotes in Microsoft Word](#)

[Existing Text Disappears When Typing](#)



A Word Options window will open.

Select **Proofing** from the options list at the left.

Then, do one or both of the following:

To turn on or off automatic spelling checking, select or clear the “Check spelling as you type check box.”

To turn on or off automatic grammar checking, select or clear the “Mark grammar errors as you type check box.”

Then click **OK**.