



Guest Wireless Instructions (Windows Vista)

[About Barret](#)

[Research Sources](#)

[Library Services](#)

[Technology Services](#)

[Need Help?](#)

[Ask Us!](#)

[Search](#)

View an animated demo of these instructions!
– requires [Flash Player](#)

SEE ALSO:

[Guest Wireless Instructions \(XP\)](#)

[Guest Wireless Instructions \(Mac\)](#)

[Wireless Network Instructions for Rhodes Users](#)

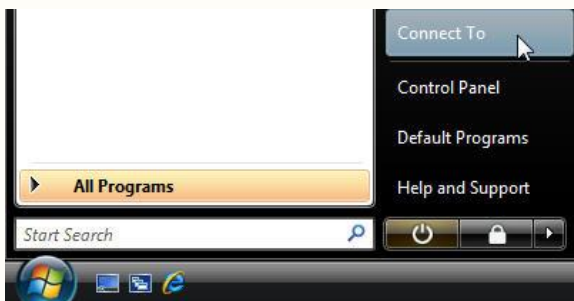
A Guest Wireless Network is available in the Barret Library to qualified guests of Rhodes College.

NOTE: Rhodes students, faculty, and staff are not permitted to use the Guest Wireless Network. All Rhodes students, faculty, and staff must configure their computers to access the secure Rhodes Wireless Network using the Wireless Network Instructions for [Vista](#), [XP](#) or [Mac](#).

The basic information required to configure Guest Access is:

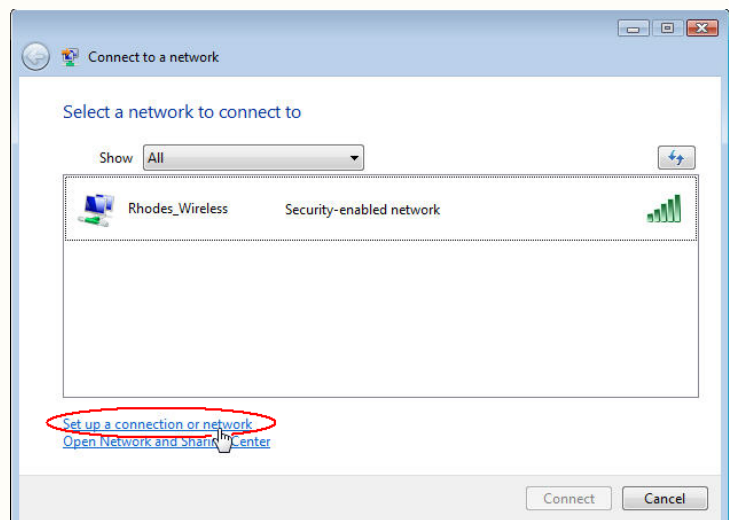
Network Name: Guest_Wireless
Security Type: WPA-Personal
Encryption Type: TKIP
Security Key: _____

Ask at the Barret Information/Help Desk (843-3890) or Check-Out Desk for permission to use the Guest Wireless Network and to receive the current Network Security Key.

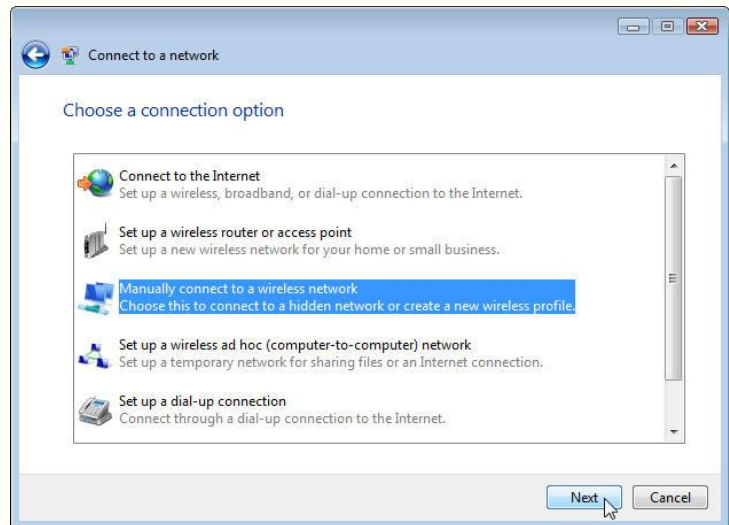


1. Click on your **Start** button and select **Connect To**.

2. A new window will open up. Click on **Set up a connection or network** at the lower left corner of the window.



3. Select **Manually connect to a wireless network** and click on the **Next** button.



4. Type **Guest_Wireless** in the Network Name field.

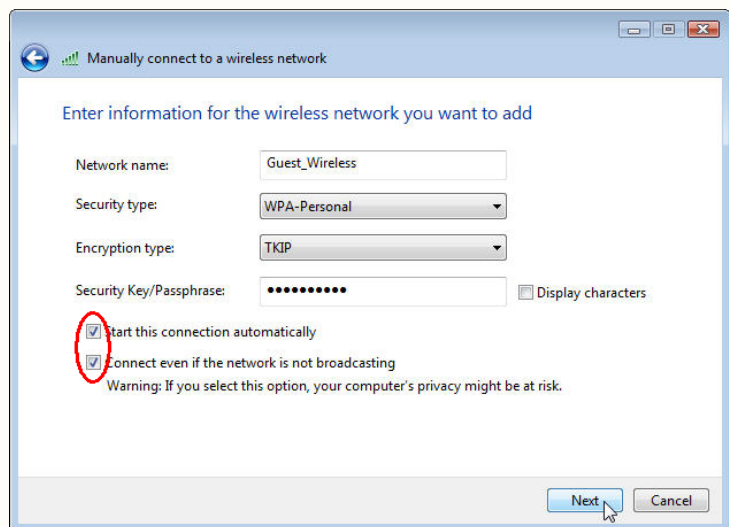
5. Select **WPA-Personal** in the Security Type field.

6. Select **TKIP** as the Encryption Type.

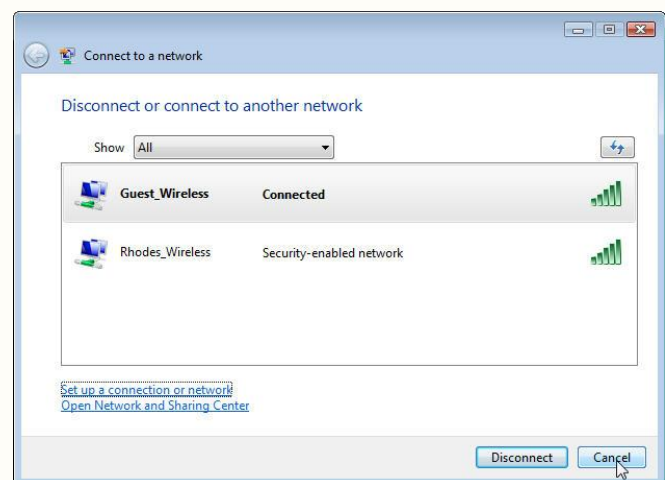
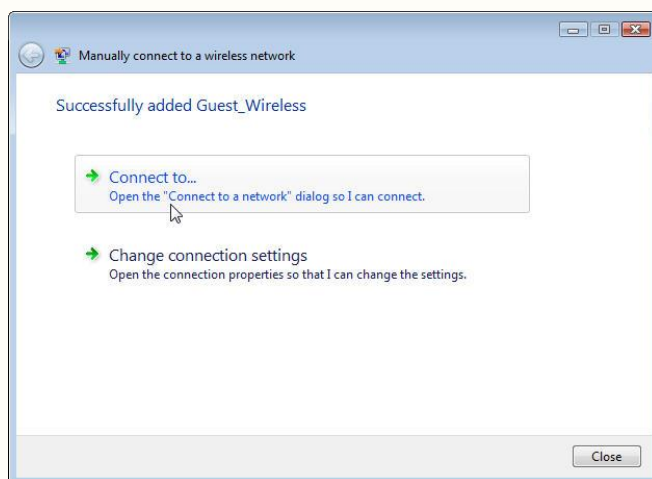
7. Type your guest network key in the Security Key/Passphrase area.

8. Make sure **BOTH** checkboxes at the bottom of the window are checked.

9. Click the **Next** button.



10. Click on the **Connect to** link.



11. You should now be connected! Click **Cancel**.