



Guest Wireless Instructions (Windows XP)

[About Barret](#)

[Research Sources](#)

[Library Services](#)

[Technology Services](#)

[Need Help?](#)

[Ask Us!](#)

[Search](#)

View an animated demo of these instructions!
– requires [Flash Player](#)

SEE ALSO:

[Guest Wireless Instructions \(Vista\)](#)

[Guest Wireless Instructions \(Mac\)](#)

[Wireless Network Instructions for Rhodes Users](#)

A Guest Wireless Network is available in the Barret Library to qualified guests of Rhodes College.

NOTE: Rhodes students, faculty, and staff are not permitted to use the Guest Wireless Network. All Rhodes students, faculty, and staff must configure their computers to access the secure Rhodes Wireless Network using the Wireless Network Instructions for [Vista](#), [XP](#) or [Mac](#).

The basic information required to configure Guest Access is:

SSID: Guest_Wireless
Network Authentication: WPA-PSK
Data Encryption: TKIP
Network Key: _____

Ask at the Barret Information/Help Desk (843-3890) or Check-Out Desk for permission to use the Guest Wireless Network and to receive the current Network Key.

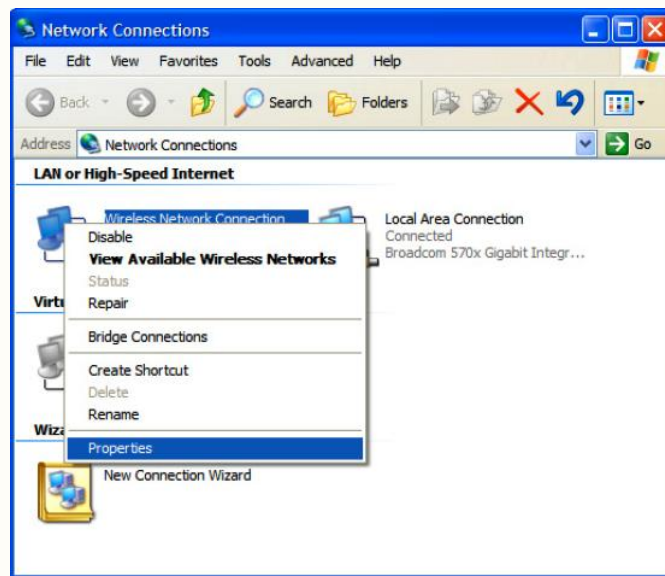
- Windows XP Pro [Service Pack 2](#) is required to use the Rhodes Wireless Network.
- The SSID used for guest wireless access (Guest_Wireless) is not broadcast, so you will need to manually configure your laptop to use it. Windows will not prompt you to perform the configuration necessary to use the guest wireless network.
- The WPA access network key changes periodically. If you are unable to authenticate to the network, you may need to request the current guest WPA key.

Detailed Instructions

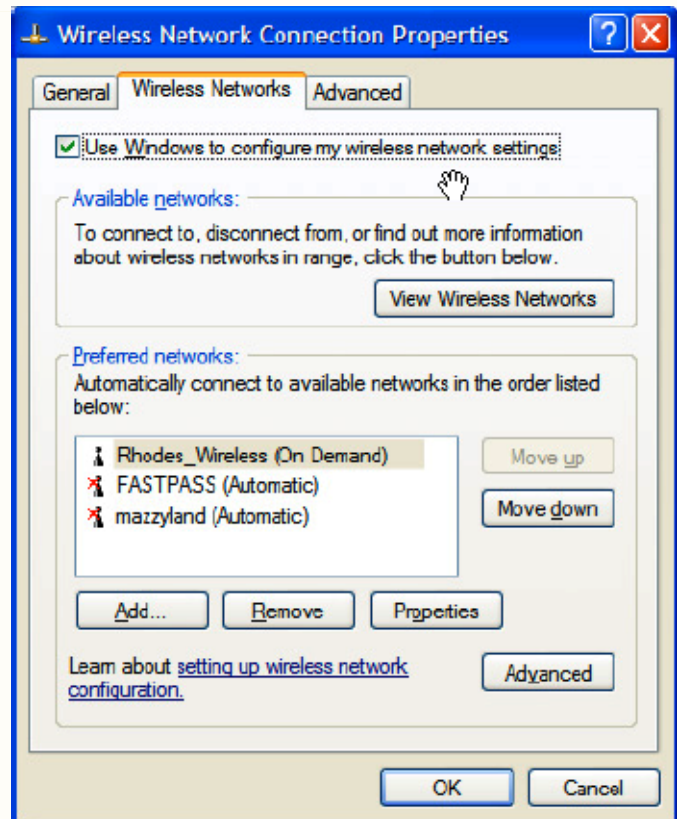
1. Open your Network Connections window by selecting it under

**Start > Connect to >
Show All Connections**

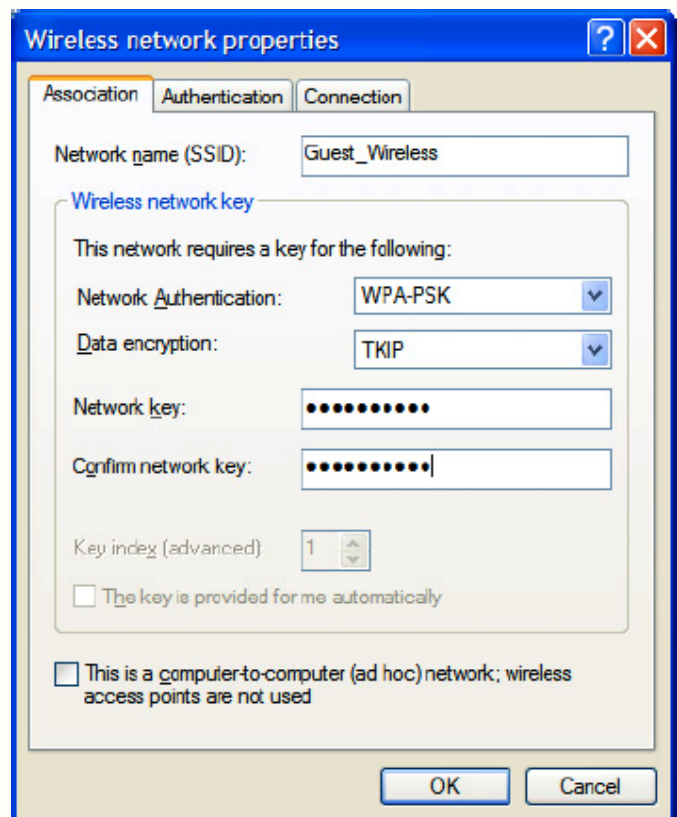
In this window, locate your "Wireless Network Connection," right-click it, and select "Properties."



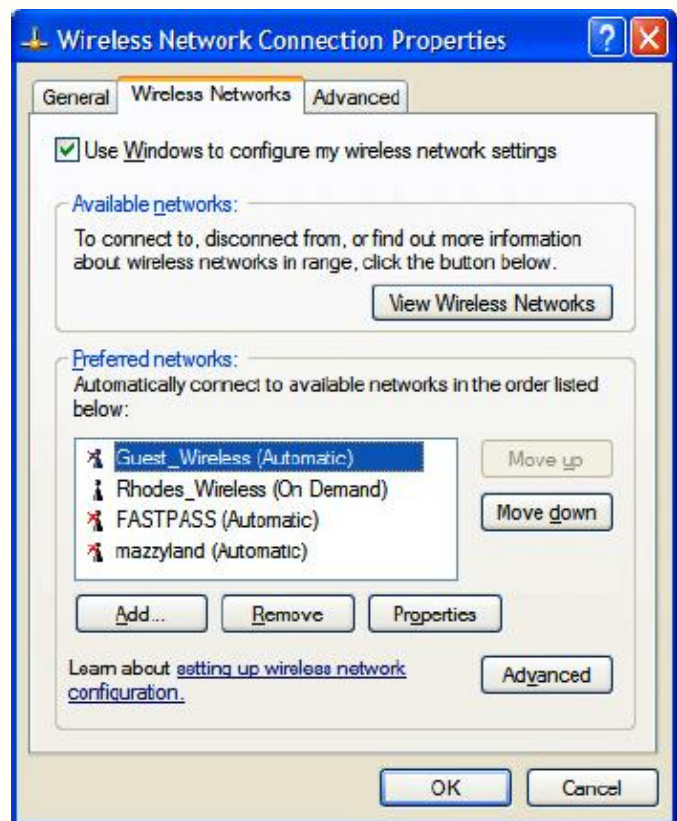
2. Select the "Wireless Networks" tab in the "Wireless Network Connection Properties" window and make sure that "Use Windows to configure my wireless network settings" is **checked**. (If it is not checked, check it.)
3. Next, click on the "Add" button to add a preferred network.



4. Type **Guest_Wireless** in the Network Name (SSID) field.
5. Select **WPA-PSK** in the Network Authentication area.
6. Select **TKIP** in the Data Encryption area.
7. Type your guest network key (acquired from the Barret Information/Help Desk or Check-Out Desk) twice in the Network Key areas. Click the OK button to save these changes.



8. You will now see Guest_Wireless in the preferred network list. If Guest_Wireless is not at the top of the preferred network list, use the "Move Up" button to move it to the top of the list. Click the OK button to save your changes.



9. Your laptop should connect to the Guest_Wireless network automatically within about 10-15 seconds. If it does not automatically connect, right-click the **Wireless Network Connection** and select **Repair** to force another attempt to connect. A successful connection should look like this:

