



# Wireless Network Instructions (Windows Vista)

[About Barret](#)

[Research Sources](#)

[Library Services](#)

[Technology Services](#)

[Need Help?](#)

[Ask Us!](#)

[Search](#)

**View an animated demo of these instructions!**  
– *requires [Flash Player](#)*

## SEE ALSO:

[Wireless Network Instructions \(XP\)](#)

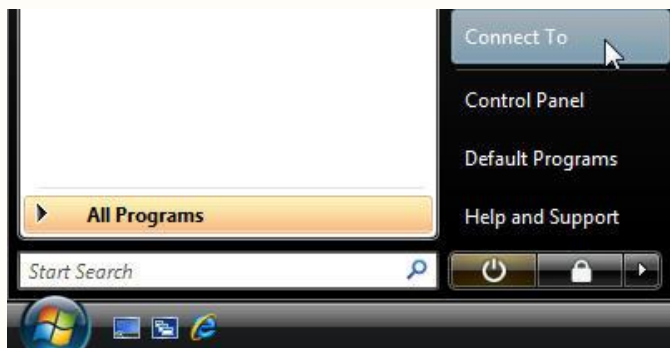
[Wireless Network Instructions \(Mac\)](#)

[Wireless Network Instructions  
\(Windows Mobile\)](#)

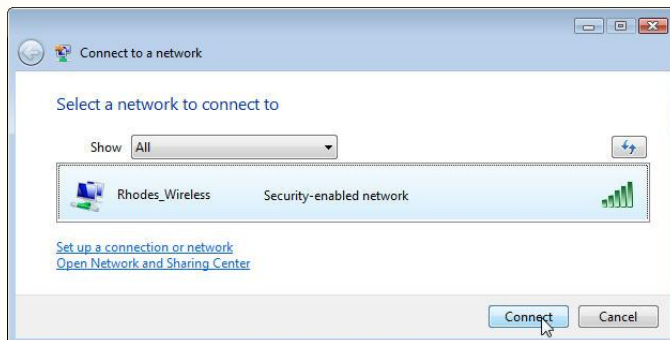
[Guest Wireless Instructions](#)

Before following these instructions, you must make sure that the drivers for your wireless card are up-to-date and properly loaded.

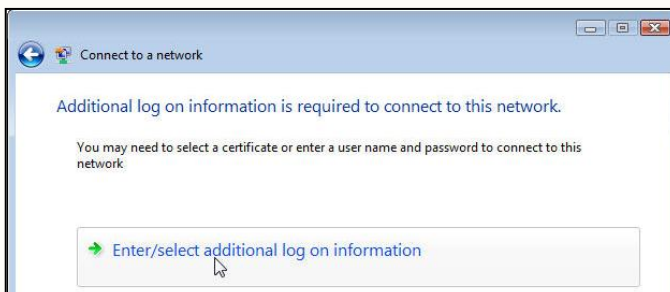
1. Make sure that you have [changed your network password](#) before proceeding.



2. Click on your **Start** button and select **Connect To**.



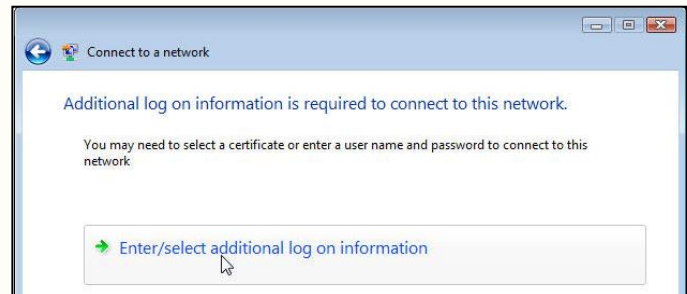
3. A new window will open up. Select **Rhodes\_Wireless** and click on the **Connect** button.



4. You will be prompted for additional information. Click on **Enter/select additional log on information**



5. Enter your Rhodes network username and password and enter **RHODES** as your logon domain. Then click **OK**.
6. You'll be prompted again for additional log on information. Click on **Enter/select additional log on information**.



7. A "Validate Server Certificate" window will open. Click **OK**.



8. Your computer should now connect to the wireless network. You'll get a window saying you are "successfully connected." Leave the checkboxes checked and click **Close**.

